

NOLIN LAKE MASTER PLAN REVISION

Tammy Markert, AICP
Planner

Glenn Myrick
Project Manager

Deryck Rodgers
Lake Project Manager

U.S. Army Corps of Engineers
Louisville District
October 21, 2021



US Army Corps
of Engineers®



GOALS OF PUBLIC INVOLVEMENT

- To establish and maintain channels of communication with the public
- To identify public's interests and concerns that are compatible with authorized purposes
- To give consideration to public views throughout the process
- To provide information about process and decision making



US Army Corps
of Engineers®



WHAT IS A MASTER PLAN?

The Master Plan is the strategic land use management document that guides the comprehensive management and development of all project recreational, natural and cultural resources throughout the life of the water resource development project.

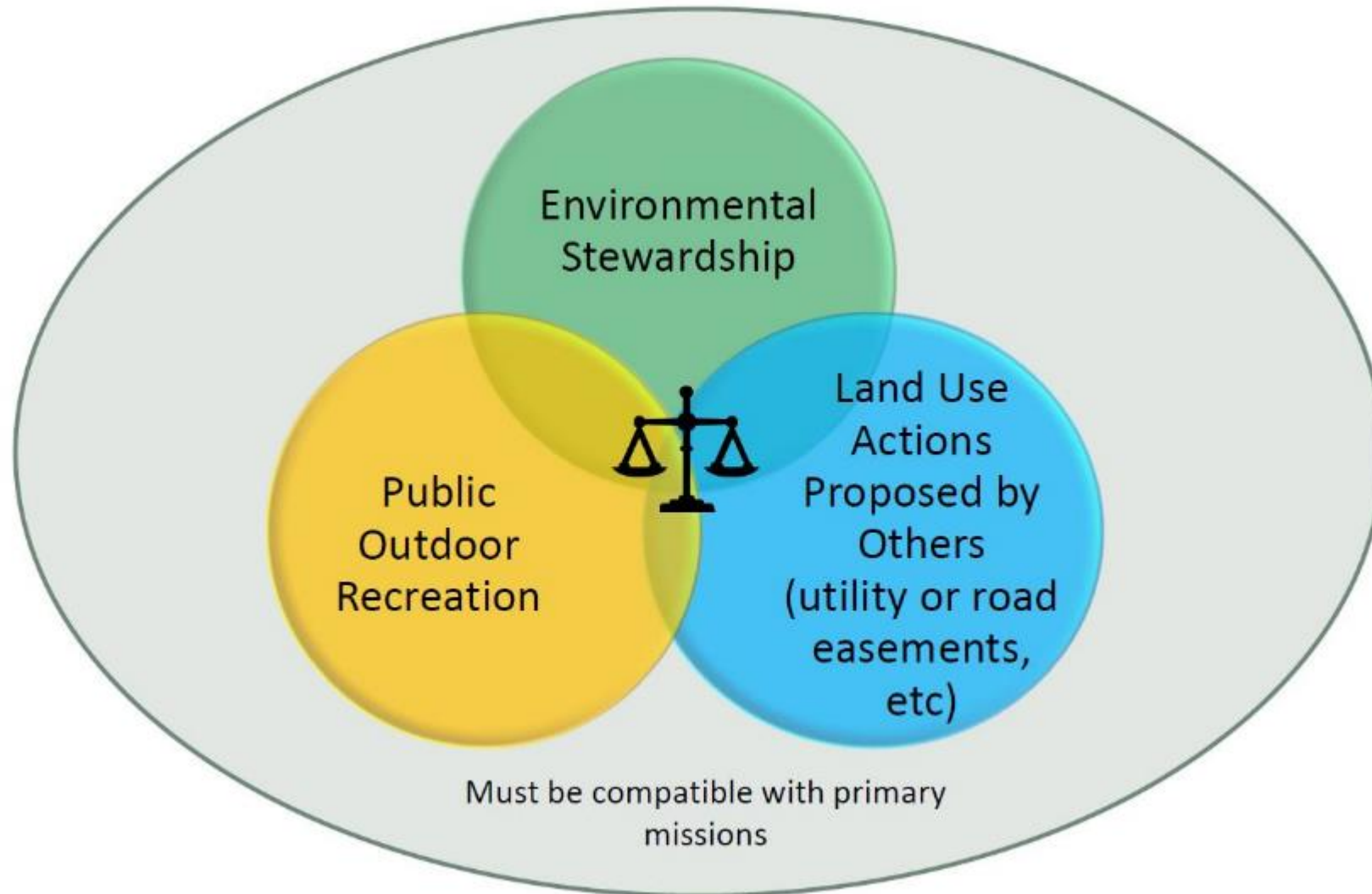
- It is a dynamic operational document projecting what could and should happen over the life of the project and is flexible based on changing conditions
- It presents broad, conceptual resource management objectives and land classifications on project lands whether managed by the Corps or by others
- Reviewed every 5 years; General goal is an effective lifespan of 15- 25 years



US Army Corps
of Engineers®



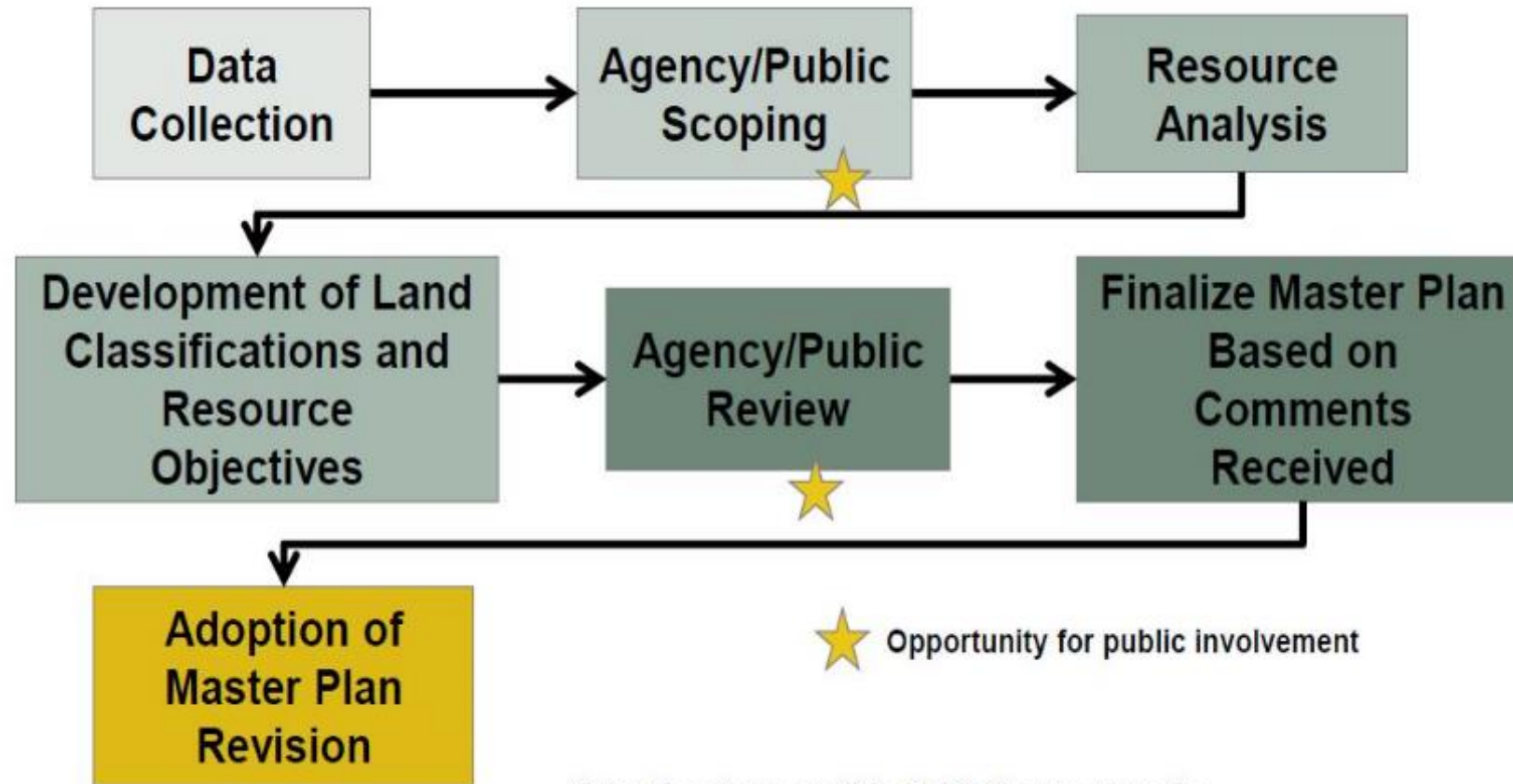
GOALS OF A MASTER PLAN



US Army Corps
of Engineers®



MASTER PLANNING PROCESS



Note: Development of the NEPA Document works best if developed parallel to the development of the Master Plan Document



US Army Corps
of Engineers®



WHAT IS NOT PART OF A MASTER PLAN?

- 1) Focus on facility design details or details of daily project administration.
- 2) Address water level management and flood control as a separate manual is used to regulate water storage and discharge.
- 3) Plan or approve changes to the management of allowable private activities as set forth in ER 1130-2-406 (docks and vegetation modification).
- 4) Technical aspects of:
 - Water management for flood risk management
 - Regional water quality
 - Water supply
 - Shoreline management
 - Water level management



US Army Corps
of Engineers®



LAND CLASSIFICATIONS

Current Use Land Classifications

- Project Operations
- High Density Recreation
- Mitigation
- Environmentally Sensitive Areas
- Multiple Resource Managed Lands
 - Low Density Recreation
 - Wildlife Management
 - Vegetative Management
 - Future/inactive Recreation
- Water Surface

1983 Land Classifications

- Project Operations
- Wildlife Management
- *Public Use Area
- *General Recreation

*These classification are now obsolete based ER 1130-2-550 and EP 1130-2-550

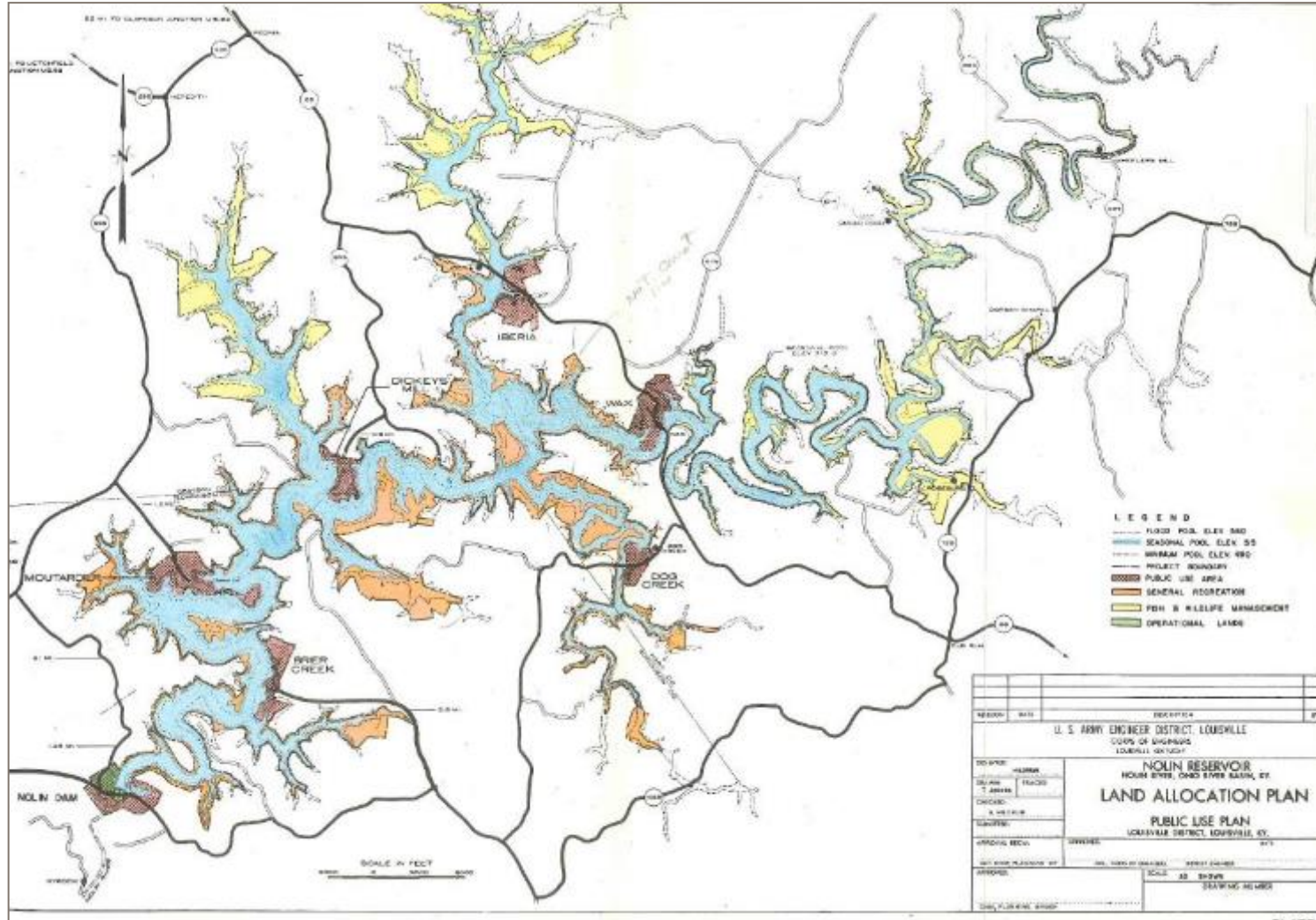
**Water zoning was not identified in the 1983 Master Plan



US Army Corps
of Engineers®



PREVIOUS LAND CLASSIFICATIONS



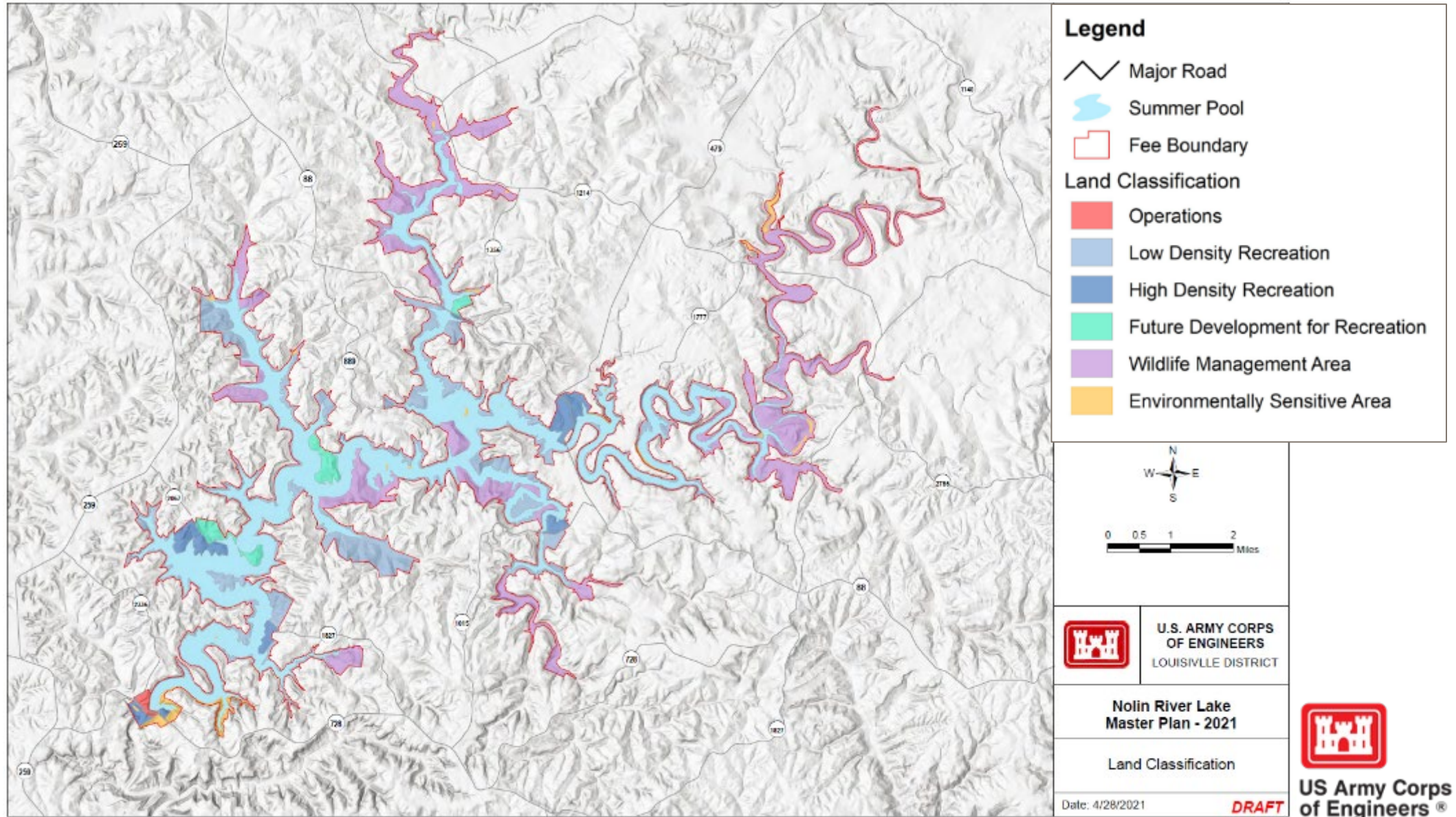
- Project Operations
- Public Use Area
- General Recreation
- Wildlife Management Area



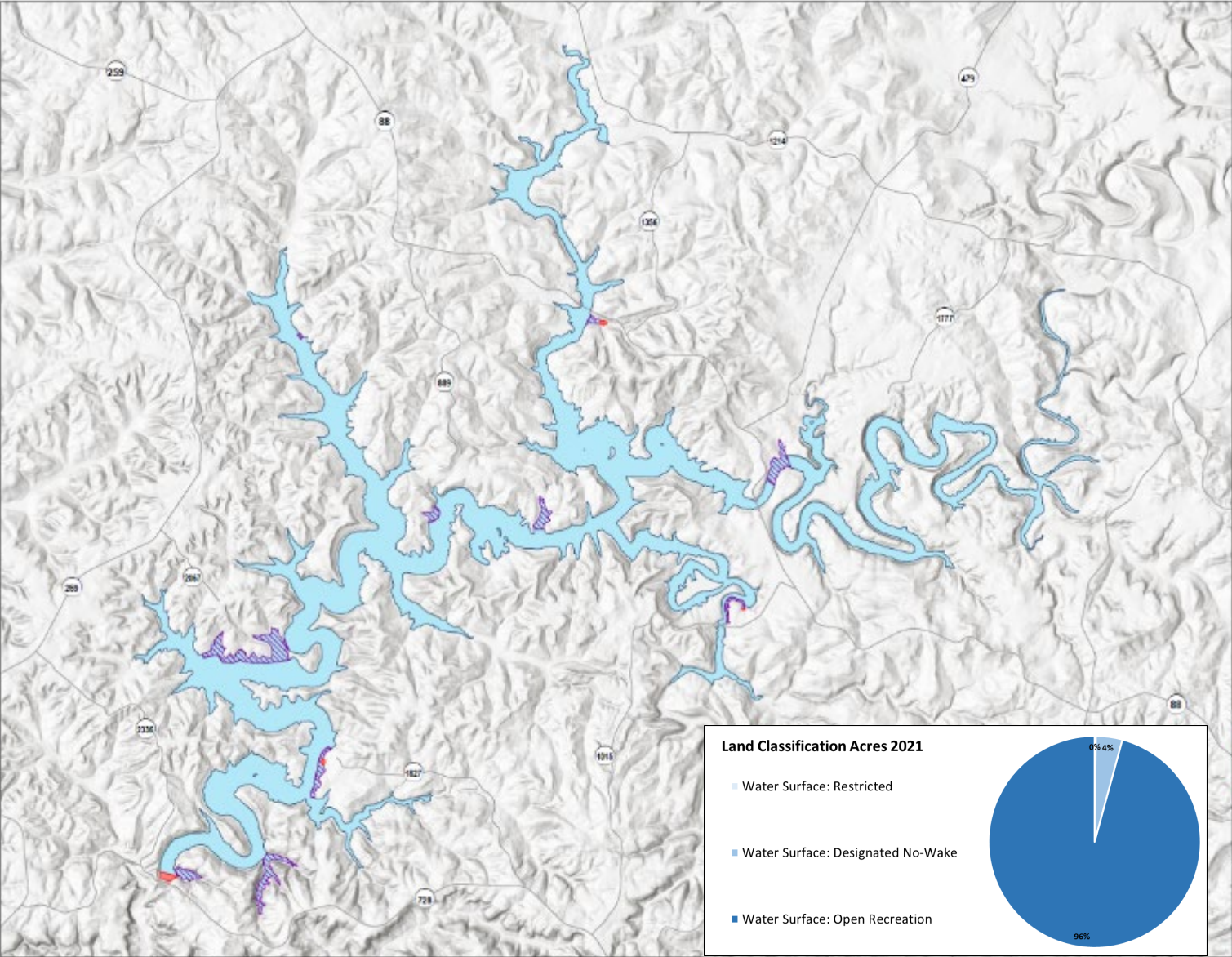
US Army Corps
of Engineers®



UPDATED LAND CLASSIFICATIONS




WATER SURFACE CLASSIFICATIONS



Legend

- Major Road
- Summer Pool
- Water Zones
 - No Wake Zone
 - No Boating Zone
 - No Restrictions





U.S. ARMY CORPS OF ENGINEERS
LOUISVILLE DISTRICT

Nolin River Lake Master Plan - 2021

Water Zoning

Date: 4/28/2021 **DRAFT**



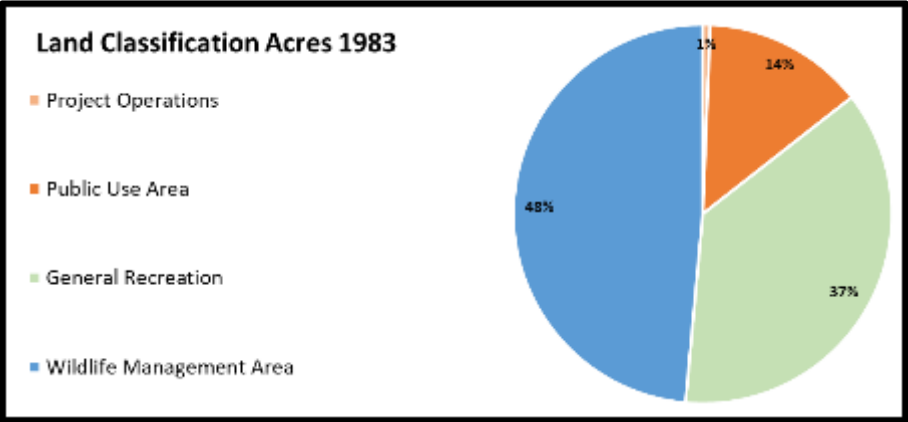
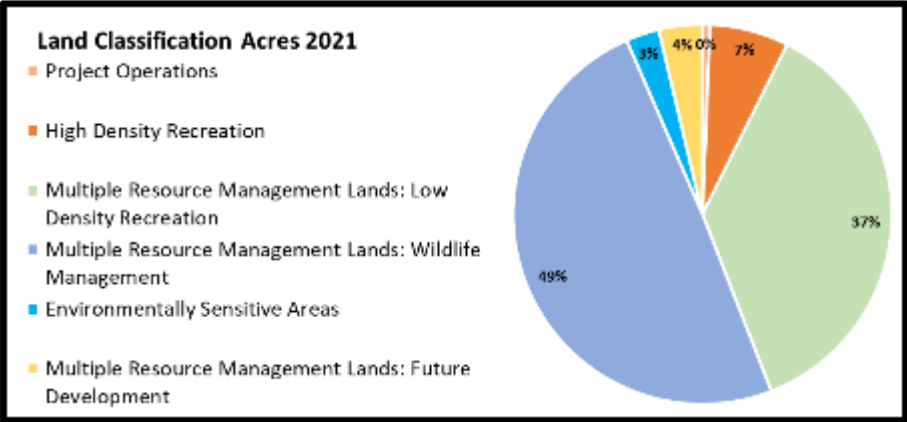
US Army Corps of Engineers®



U.S. ARMY

2021 UPDATED INFORMATION

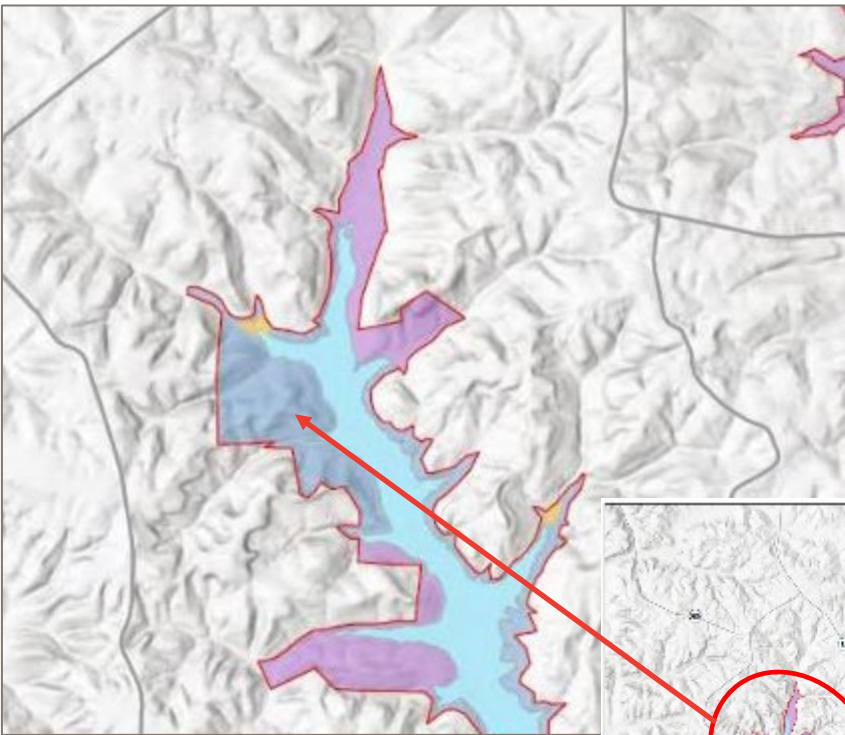
Corresponding Land Classifications		Land Quantity (Acres)			
Land Classification 2021	Land Classification 1983	2021 (acres)		1983 (acres)	Net Change
Environmentally Sensitive Area	None	216		0	216
Future Development for Recreation	Public Use Area	283	796	1074	-278
High Density Recreation		513			
Low Density Recreation	General Recreation	2793		2879	-86
Wildlife Management	Wildlife Management	3757		3777	-20
Operations	Operations	49		50	-1
		7611 acres		7780 acres	



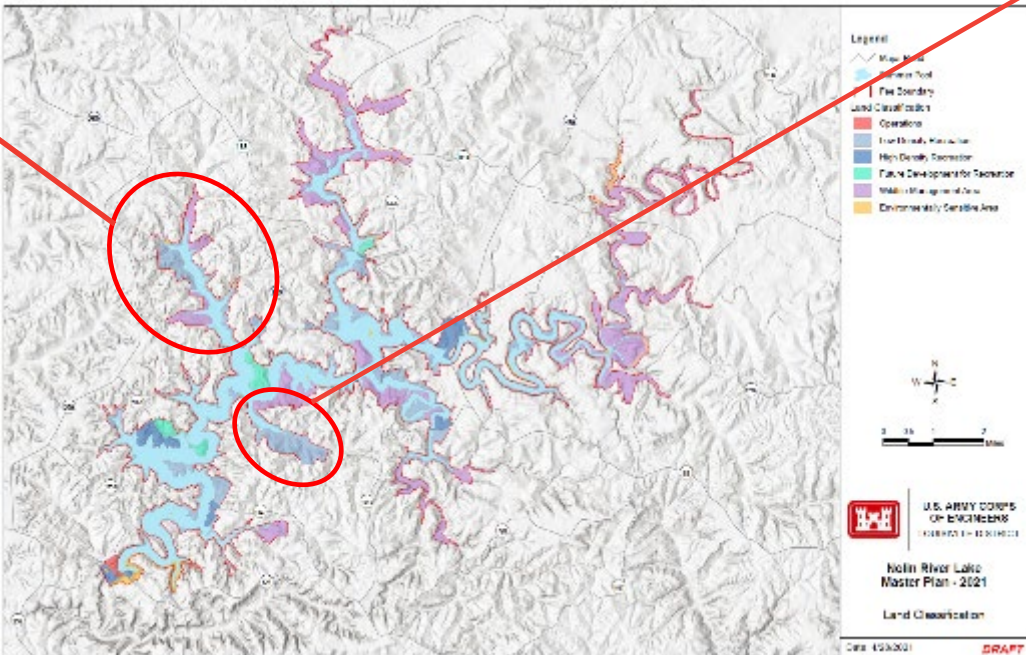
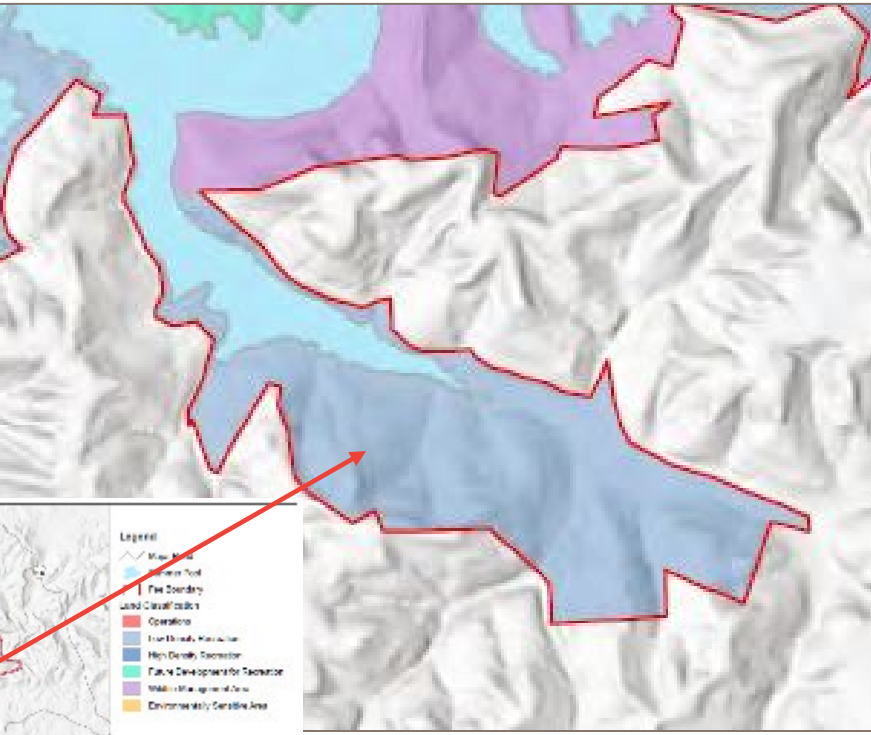
US Army Corps of Engineers®



CAMP LOUCON



LONG FALL CREEK

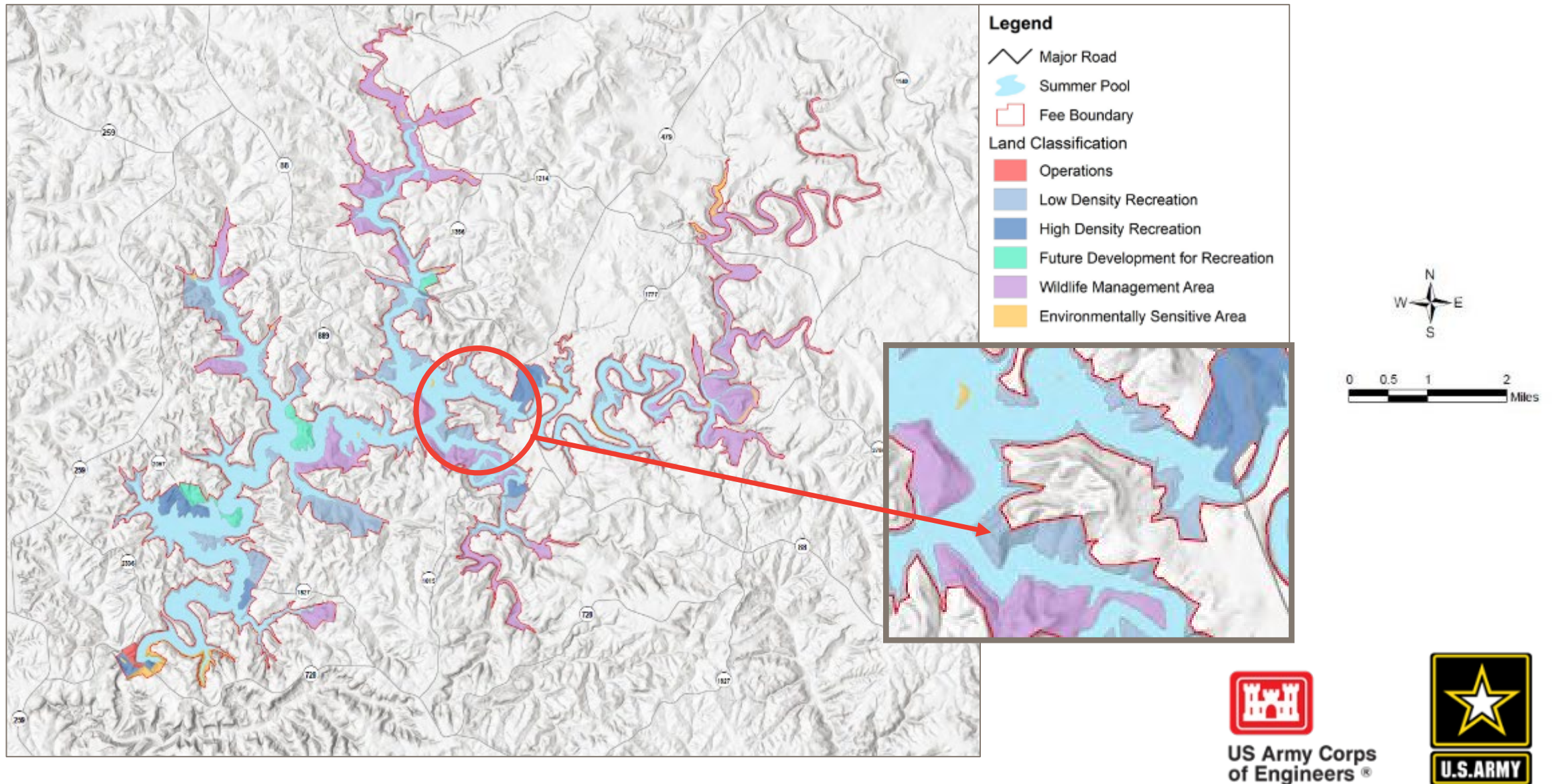


US Army Corps of Engineers®

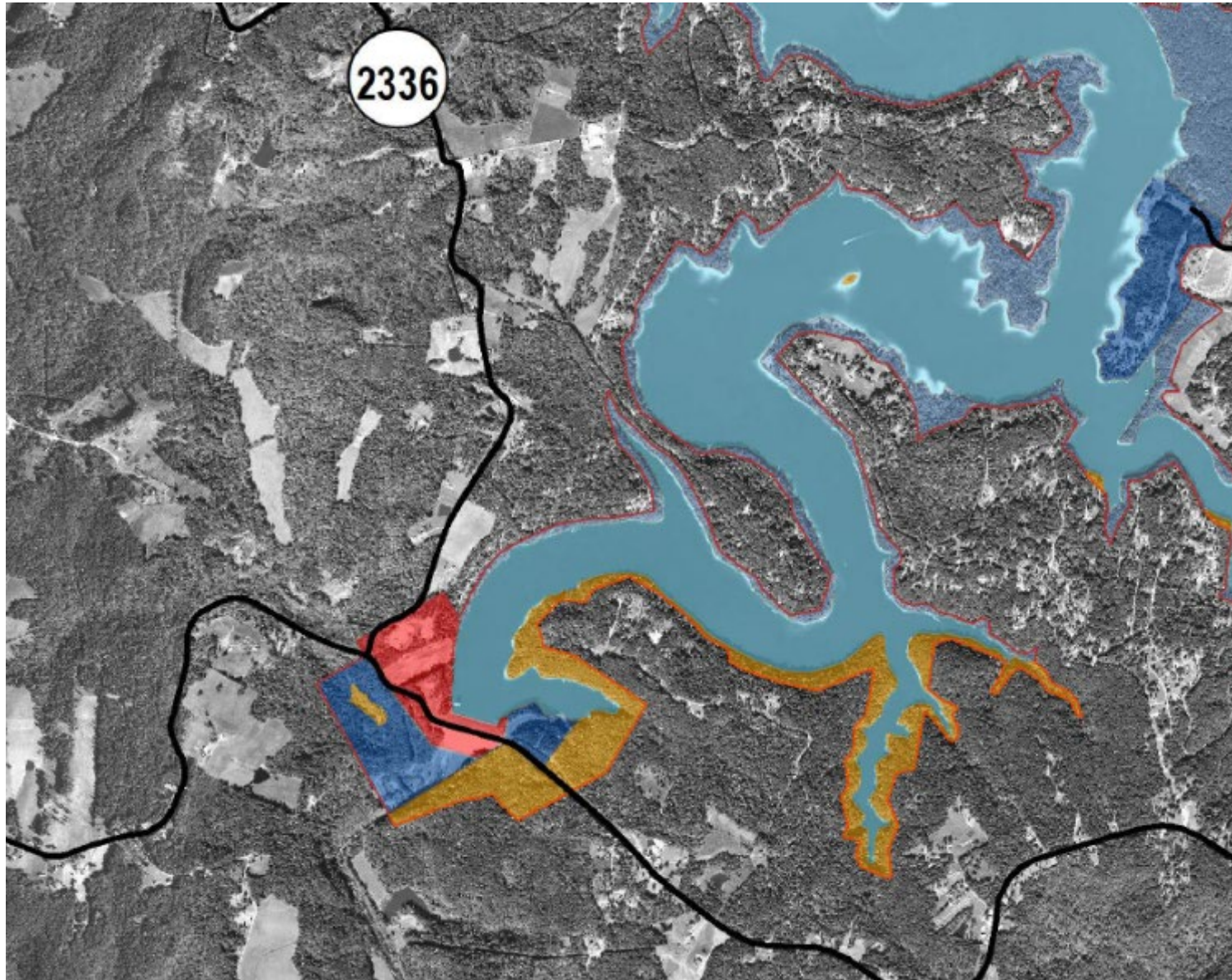


U.S. ARMY










AREAS OF RESIDENTIAL DEVELOPMENT



ENVIRONMENTALLY SENSITIVE AREAS



Legend

-  Major Road
-  Summer Pool
-  Fee Boundary
- Land Classification**
-  Operations
-  Low Density Recreation
-  High Density Recreation
-  Future Development for Recreation
-  Wildlife Management Area
-  Environmentally Sensitive Area



US Army Corps
of Engineers®



SUMMARY OF RECOMMENDATIONS

- Paddle Trails and access improvements
- Promote trail management and development
- Maintaining Lands for future recreation development
- Protect natural beauty and sensitive habitat
- Place emphasis on the Boundary line
- Working with partners to execute these objectives



US Army Corps
of Engineers®



DOG CREEK CAMPGROUND AND DAY USE AREA

Future Recommendations:

- Expanded Boat Ramp Parking.
- Additional campground amenities which would include playground, expanded shower house facilities and additional campsites.
- Expand interpretive opportunities, such as adding an interpretive trail around the wetland.
- WIFI capability.



US Army Corps
of Engineers®



WAX CAMPGROUND AND DAY USE AREA

Future Recommendations:

- Provide additional parking to accommodate increase demand for the day use areas.
 - Identify alternative access to the marina, as well as solutions to allow the marina to operate at higher lake levels.
 - Address the frequently flooded parking area that is utilized by USACE ramp users, marina users and lodge customers.
 - Expand overnight facilities and opportunities outside the current campground footprint.
 - Increase sewage treatment capacity to meet increasing demand.
 - Evaluate for potential future multi-use trail development.
- Provide additional campsite construction and additional electric and water to campsites.
 - Improve boat in access within campgrounds to provide better overnight mooring.
 - Provide WIFI access to campgrounds.



US Army Corps
of Engineers®



MOUTARDIER CAMPGROUND AND DAY USE AREA

18

Future Recommendations:

- Development of a multi-use trail system.
- Expansion of water and electric service to campsites.
- Expand overnight facilities / opportunities outside the current campground footprint.
- WIFI in campground.
- Improvements to the day use area which would facilitate large events.



US Army Corps
of Engineers®



IBERIA RECREATION AREA



There are no future recommendations for Iberia Recreation Area.



US Army Corps
of Engineers®



TAILWATER RECREATION AREA

Future Recommendations:

- Boat ramp improvements to better facilitate paddle craft launching.
- Addition of primitive campsites to accommodate paddle trail users.



US Army Corps
of Engineers®



VANMETER RECREATION AREA

Future Recommendations:

- Improved bank fishing access.
- Development of pedestrian trail to connect to the tailwater.



US Army Corps
of Engineers®



WHAT'S NEXT?

- Public Review and Comment period ends Oct 29, 2021.

Where to find the 2021 draft Master Plan

- Draft document can be found at: <https://go.usa.gov/xMy9B>

How to submit an official comment

- Comments can be submitted at any time during the official draft comment period, which will be open until Oct. 29, 2021, by email to nolin.masterplan@usace.army.mil or by mail to:

Nolin River Lake
2110 Nolin Dam Road
Bee Spring, KY 42207

QUESTIONS:

Questions and comments can be sent to
Nolin.masterplan@usace.army.mil

Updates and info can be found at:
<https://go.usa.gov/xMUTr>

Upcoming:

- Operational Management Plan (OMP)
 - Guided by and consistent with MP
 - Updated annually
- Revisit Master Plan every 5 years



US Army Corps
of Engineers®



ARE THERE ANY QUESTIONS?

THANK YOU FOR ATTENDING!



**US Army Corps
of Engineers®**

